

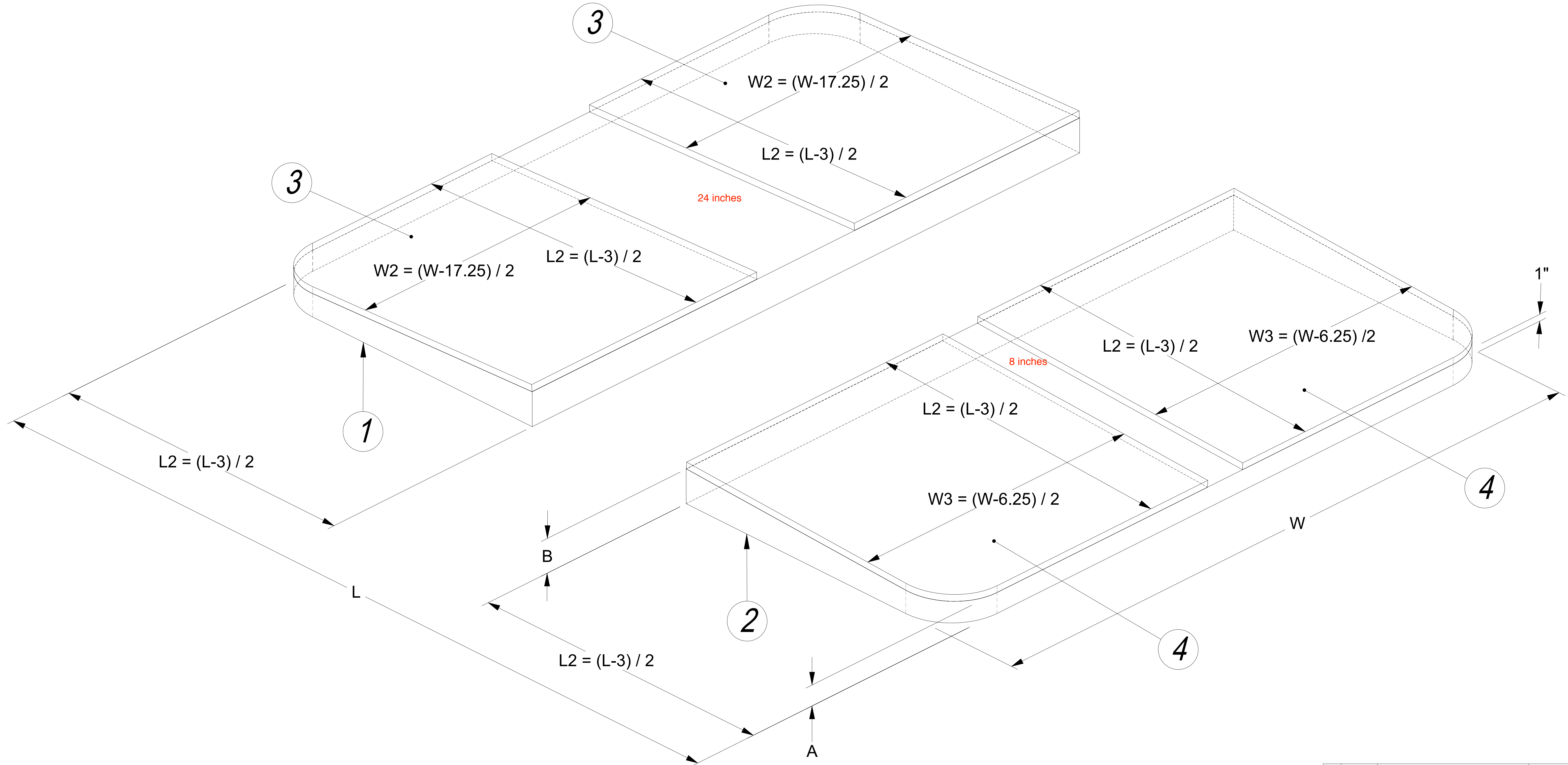
MATERIAL TABLE

DIM. "A"	DIM. "B"	DIM. "C"	DIM. "L"	DIM. "L2"	DIM. "W"	DIM. "W2"	DIM. "W2"
3"	5"	6"					
4"	6"	7"					

ITEM NO.	QTY.	DESCRIPTION
1	1	NEROK-05-01 (Rev. R) CORE - SHOULDER to ELBOW
2	1	NEROK-05-02 (Rev. R) CORE - ELBOW to TIP
3	2	NEROK-05-04 (Rev. R) CORE TOPPER - SHOULDER to ELBOW
4	2	NEROK-05-05 (Rev. R) CORE TOPPER - ELBOW to TIP

NOTE:

1. HIGH DENSITY 2.0# CORE R-30



THE INFORMATION DISCLOSED HEREIN CONTAINS PROPRIETARY RIGHTS OF NEROK LLC, AND IS NOT TO BE REPRODUCED, USED OR DISCLOSED TO OTHERS FOR MANUFACTURE OF ANY OTHER PURPOSE EXCEPT AS SPECIFICALLY AUTHORIZED IN WRITING BY NEROK LLC.

DESIGNED BY	D. COOKE	DATE	21 June, 16
DESIGN APPROVED BY		DATE	
TOLERANCE APPROVED BY		DATE	
CONTROLS APPROVED BY		DATE	
ELECTRICAL APPROVED BY		DATE	
PNEUMATIC APPROVED BY		DATE	

UNLESS OTHERWISE SPECIFIED:
 INTERPRET DRAWING PER MIL-STD-100
 DIMENSIONING AND TOLERANCING PER
 ANSI Y14.5 - 1982
 ALL DIMENSIONS APPLY AFTER HEAT
 TREAT AND PLATING
 REMOVE ALL BURRS AND BREAK SHARP
 EDGES .063 TO .015
 FILET RADIUS .005 TO .015
 MACHINED SURFACES 125
 THREADS PER FED-STD-H28

REV	DATE	DESCRIPTION	REVISED

NEROKLIFTS LLC
 TITLE: COVER - CORE ASSEMBLY
 SPA COVER LIFT
 NEROKLIFTS LLC
 DWG NO: **NEROK-05-00**
 SCALE: NONE SHEET: 1 of 3 REV: R
 FILENAME: NEROK-05-00 (Rev. R) Cover - Core Assembly.SLDDRW